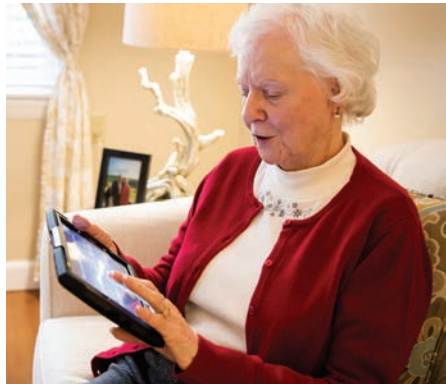


## Services & Amenities



- 24-hour On-site Nursing
- 24-hour Security Camera Surveillance
- Emergency Pendant System
- Restaurant-style Dining
- Private Dining Room for Special Events
- Movie Theater
- Beautiful Outside Courtyards and Gardening Areas
- Café
- Beauty/Barber Shop
- Spacious On-site Therapy Gym
- Generous Common Spaces for a Variety of Activities



- Comprehensive Recreational Activities 7 Days a Week to Serve Mind, Body and Spirit
- On-site Dialysis
- Weekly Housekeeping
- Laundry Service
- Complimentary Wi-Fi
- Cable TV & Telephone
- Weekday Transportation
- Plentiful Visitor Parking



Want to get an estimated cost to live at Harmony Hall?  
 Visit [LorienHealth.com](http://LorienHealth.com) and try our new Pricing Calculator.

Enjoy today.  
 Embrace tomorrow.



6336 Cedar Lane  
 Columbia, MD 21044  
 P 410.531.6000  
 W [LorienHealth.com](http://LorienHealth.com)





**At Lorien Harmony Hall, we know two things. That living your best life is possible today, and that through caring and innovation, tomorrow can be even better.**

As one of the first locations in Maryland to offer all assisted living, we know what it takes to be the best, from our 24-hour nursing care, to our vibrant social scene and activities, to our beautifully renovated lobby and community living spaces. With almost 40 years of history, we've helped define what "best" is.

Our spacious private apartments are thoughtfully designed and flexible, with a variety of apartment styles to suit your needs.

We offer an on-site movie theater, a cozy café, restaurant-style dining, relaxing courtyards and a beauty shop. Even our lobby is something special. We're a community. Warm and welcoming. Fun and familiar.

And above all, we're caring, in every sense of the word. We provide weekly housekeeping and daily recreational activities. We offer reliable, innovative medical care, including the only on-site assisted living dialysis center in Maryland, for convenience and peace of mind. Add to all that the exceptional Skilled Nursing resources of Lorien Columbia, located right next door.

It's a robust, seamless continuum of care that allows you to choose today, and choose tomorrow, when you choose Lorien Harmony Hall.

## Health Services



### Assisted Living

Amidst the tree-lined beauty of Cedar Lane in Howard County, Lorien Harmony Hall offers a supportive combination of assistance and independence. Our floor plans give you the flexibility you need with studio, one-bedroom and companion efficiency apartments. We offer 24-hour nursing coverage for your well-being and peace of mind, and easy access to Skilled Nursing through our continuum of care, with Lorien Columbia located immediately next door on our smoke-free campus.

### Adult Outpatient Rehabilitation

Customized programs for Physical, Occupational and Speech Therapy are all available at Lorien Harmony Hall, developed and provided by licensed staff. We feature specialized equipment including SciFit, Balance and NuStep, and offer a full range of care.

### Physical Therapy

Our physical therapists will use treatment techniques to promote mobility, strength, balance and safety while restoring function, reducing pain and preventing disability.

### Occupational Therapy

Our occupational therapists can help you regain basic self-care skills such as dressing, grooming, bathing and other personal needs during activities of daily living.

### Speech Therapy

Work with our Speech Language Pathologists to strengthen and rehab your voice quality, language, cognition and communication, and also address swallowing disorders.

### On-Site Dialysis

Lorien Harmony Hall offers on-site dialysis provided by trained, experienced professionals who specialize in chronic kidney disease patients in long-term care settings. Lorien Kidney Care is the only dialysis center in Maryland located on-site at an assisted living community, providing convenience and peace of mind.

### Respite Care

If you're providing care at home and need to arrange for a short stay, Lorien Harmony Hall is ready to help. Our Respite Care services provide the extra support you need for just a few weeks or as long as three months.



### Additional Health Services

- Wound Care
- Sliding Scale Insulin
- Hoyer Lift
- Bolus Tube Feeding



# Care forward.